

MORISSET PUBLIC SCHOOL



Henny Penny Hatchlings - Adoption

Dear Parents and Caregivers,

KC and K/IBC have been participating in the Henny Penny Hatchling Program and are looking after some baby chicks. This program finishes on Friday 17th November and we would like to offer the opportunity for families to adopt our baby chicks.

The chicks will be ready to be taken to their new home on either Thursday 16th or Friday 17th, which ever suits the adopting family best.

Some extra information:

- You will need to take a minimum of 2 chicks as they can become distressed when on their own.
- We are unsure of the sex, so there is a 50% chance you could get a male and a 50% chance you could get a female.
- Please be aware that once you have adopted the chicks they are unable to be returned, even if you do end up with a rooster.

More information is attached.

If you are interested in adopting our baby chicks please register your interest by completing and returning the note to the front office by Tuesday 14th November.

Kind Regards,

Sara Metse

Name: _____

1. We are interested in adopting *(please specify number)* _____ baby chicks.
2. We have read all of the attached information and understand the commitment

(please circle) yes / no

3. We would be able to pick up the chicks on the following day *(please circle)*

Thursday 16th November morning / afternoon

Friday 17th November morning only

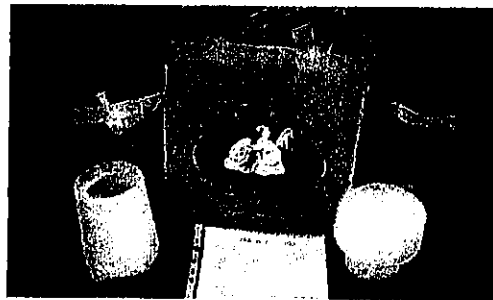
4. We would like to order a 'Chick Take Home Pack' *(please circle) yes / no*

Chick Take Home Packs

Henny Penny Hatching Chick Take Home Packs are designed to help you take care of your chicks for the first week or two. They are highly recommended for families who are raising chickens for the first time.

Each pack contains:

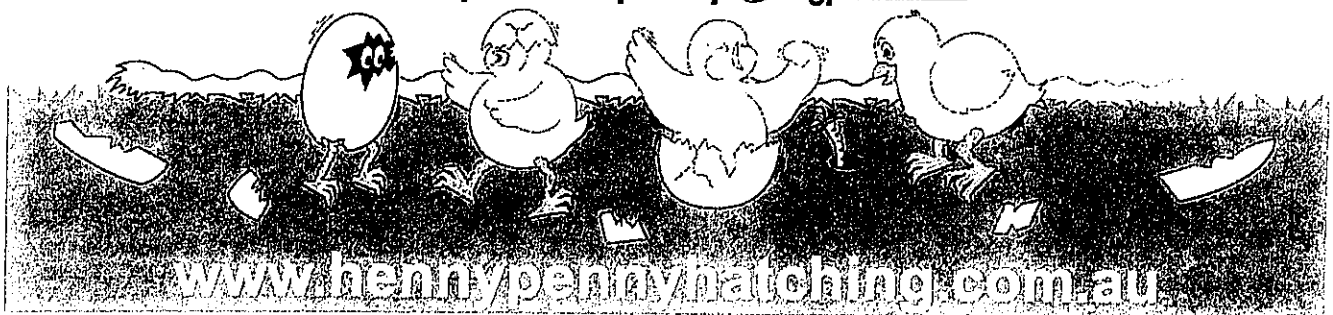
- 1 large feeder
- 1 large drinker
- 1 X 2kg bag feed: *'Chick Starter'*
- 1 bag of bedding material (wood shavings)
- 1 information sheet: *'Taking Care of your Chicks'*



Price per pack: \$30.00
(cash only, payable on pick-up day)

Please order and pay for your pack through the staff member in charge of the program by the second Thursday of the program. The packs will be delivered when we collect our equipment on the following day (Friday). You will need to supply a suitable container for the safe transport of your chicks.

Staff members - please order packs from Henny Penny Hatching by 5pm on the second Thursday of the program, either by phone: 0413 227 702
or by email: hphtracy@bigpond.com





ADOPTING CHICKS

Henny Penny Hatching asks any families considering adopting chicks, particularly those who have limited experience in keeping and raising chickens, to read and consider the following before they take chicks home:

- Do your local council regulations allow you to keep poultry on your property?
- Will your backyard be suitable when the chicks grow into adult chickens?
- Remember that 50% of the chicks will be roosters. Are you able to, and prepared to, keep roosters on your property?
- Will your chickens co-exist happily with any pets you may already have?
- Will your neighbours mind having chickens living next door?
- Who will look after your chickens when you go on holiday?
- Chickens will produce eggs for 2-3 years but they can live for 10 years and more. Are you prepared to look after them for their entire lifespan?
- Click on [Gardening Australia](#) for more information regarding keeping chickens as pets.
- Chickens are flock birds. You will need to take 2 or more chicks home in order for them to be naturally content. Are you prepared to keep 2 or more adult chickens?



When you take your chicks home you will need to provide a suitable brooding area, a small drinker, a feeder, and a desk lamp, which you can suspend over the area for warmth. However, when the chicks develop their feathers, at about 8 weeks, they will need to be housed outside. You should gradually reduce the heat source in the weeks leading up to this. Once you have moved your chickens outside, they will need shelter, nesting boxes with straw or shavings, and perches (which can be made from tree branches). There are a number of excellent coops on the market. Some of these can even be moved around the backyard (see [Useful Information](#)).