



## IMPORTANT DATES

2022

### TERM 4

- Nov 10 Stage 1 Excursion—Tocal Years 1 & 2—History
- Nov 11 Remembrance Day Kind.23 Transition 9.15-10.15 Scripture Assembly
- Nov 14 Stge 3 Luna Park Excursion
- Nov 15 4G Parent/Tchr Meetings
- Nov 17 Presentation Day—@High School - 11:15am
- Nov 18 Yellow Mufti Day Kind.23 Transition 9.15-10.15
- Nov 21 P&C AGM 12.30 Zoom
- Nov 25 Kind.23 Transition 9.15-10.15
- Nov 29 Yr 6 Orientation Day MHS & Parent Forum
- Nov 30 Swim School Commences Yrs K-4.

**Information, Updates and Events**  
School Stream App,  
Facebook,  
and the School Website.

Contact the school via the school email address or by phoning 49 731435 or 49731533

#### Email:

[morisset-p.school@det.nsw.edu.au](mailto:morisset-p.school@det.nsw.edu.au)

#### Website:

[www.morisset-p.schools.nsw.edu.au](http://www.morisset-p.schools.nsw.edu.au)

**Kinder Enrolments for 2023 are now open. Our transition program has commenced**

Respect Safety Engagement Getting

Along Confidence Resilience Organisation Persistence



Along Confidence Resilience Organisation Persistence

**Billu is inviting you to wear mufti – Yellow for Confidence.**

**Friday November 18, 2022**  
*(For safety reasons, you still need to wear enclosed shoes, covered shoulders and school hat for the playground)*

Respect Safety Engagement Getting

## TERM 4 - Week 5 November 9, 2022

### Key Dates for Term 4

- Wednesday November 9** - \* 6pm - MADD night at Morisset High - all welcome
- Thursday November 10** - \* Tocal Excursion (Stage 1 - 1M and 1/2J) Boarding Coaches at 8.30 am sharp.
- Friday November 11** - \* Remembrance Day - One minute silence at 11am  
\* Mr Groves taking school leaders to Dora Creek Service  
\* 9:15 - 10:15am - 2023 Kindergarten Transition Session  
\* Scripture Assembly/ Concert for Scripture students
- Monday November 14** - \* Stage 3 Excursion to Luna Park (Yr 5 and 6 students) Leaving promptly at 8.45 am. Returning 4.30 pm approx.
- Tuesday November 15** - \* 4G Parent Teacher Interviews
- Thursday November 17** - \* 11:15am - Presentation Day in Morisset High School Hall.
- Friday November 18** - \* Mufti - Yellow - Confidence  
\* 2023 Kindergarten Transition Session 9:15 - 10:15am
- Monday November 21** - \* P&C AGM and General meeting (ZOOM) 12:30pm
- Friday November 25** - \* 2023 Kindergarten Transition Session 9:15 - 10:15am
- Tuesday November 29** - \* Year 6 High School Orientation Day - all day MHS Parent Forum MHS
- Wednesday November 30** - \* Swim School Commences - K-4 students
- Thursday December 1** - \* Deadly Awards assembly at Morisset High  
\* Intensive Swim K-4 day 2
- Friday December 2** - \* Mufti - Green - Getting Along  
\* Last Scripture for 2023  
\* 9:15 - 10:15 2023 Kindergarten Transition Session  
\* Intensive Swim K-4 day 3
- Monday-Friday Dec. 5-9** - \* Intensive Swim K-4 day 4-8  
\* Friday—Silly Sock Day? If Target Reached!!
- Monday December 12** - \* Intensive Swim K-4 day 9
- Tuesday December 13** - \* Year 6 Farewell  
\* Stage 2 Murrook Excursion (Year 3 and 4 students)  
\* No swimming school
- Wednesday December 14** - \* Attendance BBQ - Mufti - all key colours  
\* Last swim school day - old clothes needed for water safety component
- Thursday December 15** - \* K-4 - Movie/ Speers Point Park Excursion  
\* Stage 3 Excursion - High Ropes at Minmi (Year 5 /6 )
- Friday December 16** - \* Last day for students -Mufti - Purple - Persistence

Mrs Warham

# 2022 Christmas Hamper Food Drive



It is time to help Southlake Marketplace with their annual Christmas Hamper food drive. Up until November 30, Morisset PS will be running a Food Drive to collect items to help fill their hampers.

These are the items needed for the Christmas hampers: baked beans, tinned tomatoes, tinned baby potatoes, tinned tuna, tinned beetroot, tinned corn, spaghetti sauces, pasta, rice, noodles, soups, sauces, gravy, tinned fruit, jelly, cake mixes, biscuits, lollies, drinks, Long Life Milk, chips etc.

*Please ensure contributions are new, un-opened and have use-by dates in 2022.*

We have set a target of **600 items** to be collected by **Wednesday November 30**. Items can be donated at the Office. If we reach our target, we will have a "Silly Sock" day on Friday December 9.

Please consider donating something towards this very worthy cause - helping to ensure that no person or family goes hungry this Christmas in our local area. We realise that not everyone is able to contribute however, we hope that as many of you who are able, will do so.

## COVID smart measures for schools

### Information for families

We know that being together in the classroom is the best thing for our students' learning, growth and welfare. This term we will continue to implement several measures to allow us to prioritise both the wellbeing of our students and a consistent and productive learning environment.

#### Stay home if unwell

- If your child is unwell, you must keep them at home. If they are displaying COVID-19 symptoms, they should take a COVID-19 test (PCR or RAT) and follow the advice from the NSW Government on [managing COVID-19 safely at home](#).
- Your child should only return to school when they are symptom free.

#### Vaccinations

- Vaccinations for COVID-19 and other viral illnesses are one of the best ways of protecting yourself, your family and the community. Vaccination is a safe and effective way to give your immune system a helping hand against many illnesses.
- All eligible students and staff are strongly encouraged to keep up to date with their vaccinations to protect their health.
- All staff working in schools for specific purposes (SSPs) are required to be double vaccinated against COVID-19 or hold a valid medical contraindication.

#### Rapid antigen testing

- Rapid antigen tests (RATs) should be used if your child is displaying COVID-19 symptoms.
- Students who test positive to COVID-19 are encouraged to notify their school and register their positive test results with [Service NSW](#) to have access to timely advice and support from NSW Health.
- Schools will maintain a reserve stock of rapid antigen tests onsite for surveillance testing purposes in the event of an outbreak.

#### Hygiene and cleaning

- Students are encouraged to regularly wash their hands with soap and water and to use personal protective equipment as required.
- Boosted day cleaning of schools will focus on high-touch areas and other hard surfaces, door handles, lockers, light switches and handrails in stairways and movement areas.

#### Ventilation

- Fresh air is the most effective form of ventilation to minimise the risk of transmission.
- During the warmer months, cooling will be used in conjunction with ventilation methods to balance thermal comfort.
- All learning spaces in public schools have been checked to ensure appropriate levels of ventilation and air purifiers have been provided where needed.
- Using outdoor spaces will continue to be encouraged where possible.

#### Masks

- Mask-wearing is strongly encouraged where possible for all students, staff and visitors, particularly indoors and/or when physical distancing is not possible, and if they have been exposed to COVID-19.
- Mask-wearing continues to be required at all times for staff, volunteers and other workers who support our students who are at greater risk of serious illness should they contract COVID-19, whether they be in schools for specific purposes, support units or mainstream classrooms.

#### Visitors

- Visitors can attend school sites regardless of their vaccination status.
- Visitors who are engaging directly with students in certain higher-risk settings for school operations and curriculum delivery and allied health partners for the wellbeing of students, may be required to wear masks.

#### Activities

- Health and safety risk assessments will be integrated into planning activities, including excursions and overnight camps.
- Parents and carers will be made aware of the risk of exposure and will need to give permission for certain activities.

#### Responding to local situations

- Schools will work with the department's Health, Safety and Staff Wellbeing case management team to respond appropriately to local situations, including outbreaks of viral illness.
- In some cases, schools may temporarily introduce additional measures for a limited time to help stop the chain of infection, including requiring mask-wearing, postponing or limiting non-essential activities and directing certain groups to learn remotely.


#### Learning remotely

- Schools continue to have access to digital, guided and printed learning resources to support students who need to learn remotely.

#### Telephone Interpreter Service

If you need further information please call your school principal. If you need an interpreter to assist you with your enquiry please call the Telephone Interpreter Service on 131 450 and ask for an interpreter in your language. Tell the operator the phone number you want to call, and the operator will get an interpreter on the line to assist you with the conversation. You will not be charged for this service.

The NSW Government is committed to ensuring school operations continue while prioritising the safety and wellbeing of students and school staff.

TERM 4	WEEK 	Monday	Tuesday	Wed.	Thursday	Friday	Sat/ Sun
OCT	1	Yr 6 PCYC Sports at school 10					15/16
OCT	2	Yr 6 PCYC Sports at school 1M - Parent/Teacher Conference P&C 1pm Zoom 17	4G Parent/Teacher Conference K-2 AFL 18	1/2J—Parent/Teacher Conference 19	4/5K— Parent/Teacher Conference 20	<b>MUFTI—RED</b> Resilience 21	22/23
OCT	3	Yr 6 PCYC Sports at school 60 - Parent/Teacher Conference NAPLAN ICT - Yr 6 randomly selected participants. 24	3GL - Parent/Teacher Conference K-2 AFL 25		KB - Parent/Teacher Conference Kinder 2023 Info Evening 27		29/30
OCT/ NOV	4	Yr 6 PCYC Sports at school 31	K-2 AFL 1	Wellbeing Wednesday Rep-tile Show 2		<b>MUFTI—ORANGE</b> Organisation 4	5/6
NOV	5 BOOKFAIR WEEK	Yr 6 PCYC Sports at school Henny Penny Hatching Kind. Yr1 7	K-2 AFL Jarjum Soar 8	Learning @Morisset / Grandparents Day MADD Night MHS 9	Stage 1—Total Excursion 10	Kinder 2023 - Session 1 Remembrance Day. Scripture Assembly 11	12/13
NOV	6	Yr 6 PCYC Sports at school LUNA PARK Excursion St 3 14	K-2 AFL 4G Parent Teacher Mtg 15		Presentation Day Morisset High School Hall 17	<b>MUFTI—YELLOW—</b> Confidence Kinder 2023—Session 2 18	19/20
NOV	7	Yr 6 PCYC Sports at school P & C AGM Zoom 12.00 pm 21	K-2 AFL 22			Kinder 2023—Session 3 25	26/27
NOV/ DEC	8	Yr 6 PCYC Sports at school 28	Yr. 6 Parent Forum and Orientation—Morisset High School 29	SWIM SCHEME commences Yrs 1-4 -10 days 30	SWIM SCHEME Yrs 1-4 Deadley Awards Assembly MHS 1	<b>MUFTI—GREEN</b> Getting Along Kinder 2023—Session 4 Last Scripture SWIM SCHEME Yrs 1-4 2	3/4
DEC	9 SWIM SCHEME Yrs 1-4 - All Week	Yr 6 PCYC Sports at school SWIM SCHEME Yrs 1-4 5	SWIM SCHEME Yrs 1-4 6	SWIM SCHEME Yrs 1-4 7	SWIM SCHEME Yrs 1-4 8	SWIM SCHEME Yrs 1-4 9	10/11
DEC	10	Yr 6 PCYC Sports at school SWIM SCHEME Yrs 1-4 12	Yrs 3 & 4 - Excursion to Murrook Educational Centre—NO SWIMMING YEAR 6 FAREWELL 13	Attendance BBQ <b>MUFTI—All Keys or Favourites</b> SWIM SCHEME Yrs 1-4 Last Day. Old clothes needed for water safety component 14	MOVIE DAY / Speers Pt Park Yrs K—4 Minmi High Ropes—Yr 5 & 6 15	<b>MUFTI—PURPLE</b> Persistence <b>** LAST DAY FOR STUDENTS **</b> 16	17/18
DEC	11	19	20	21	22	23	24/25



WELCOME TO  
**MORISSET  
PUBLIC SCHOOL**



**RESPECT | SAFETY | ENGAGEMENT**



**2023 Kindergarten  
Transition**  
Currently Accepting  
Enrolments

**Morisset Public School**

Phone: 0249 73 1533

[morisset-p.school@det.nsw.edu.au](mailto:morisset-p.school@det.nsw.edu.au)

[www.morisset-p.schools.nsw.edu.au](http://www.morisset-p.schools.nsw.edu.au)



# Morisset Public School

[morisset-p.schools.nsw.gov.au](http://morisset-p.schools.nsw.gov.au)

[schoolstream app](#)

[facebook](#)

## PROGRAM

### *Parent Information Evening:*

Thursday October 27, 2022 – 5.00 – 6.00 pm

### *Kinder Orientation Sessions:*

**Session 1:** Friday Nov. 11 – 9.15 – 10.15 am

**Session 2:** Friday Nov. 18 – 9.15 – 10.15 am

**Session 3:** Friday Nov. 25 – 9.15 – 10.15 am

**Session 4:** Friday Dec . 2 – 9.15 – 10.15 am

## Community Announcements

### BONNELLS BAY SALVOS – CHRISTMAS CAROLS



- WHERE:** The Local Salvation Army Grounds, Bonnells Bay
- WHEN:** Friday 9th December
- WHAT:** Christmas Carols and a Fireworks Display  
Hot Food and Drinks available

## CONTACT US

P: 02 4015 7000

E: guardianship@mindaribbalalc.org



## DROP IN

### Community Hub

Mindaribba Local Aboriginal Land Council  
1a Chelmsford Drive, Metford

Monday - Thursday  
9.00am - 5.00pm  
Friday 9.00am-4.00pm

*We can also arrange to meet you at our Cessnock location or we can come to you, wherever you are across the Hunter.*



*Witjimaliny parrag  
ngaatany kuutjita.*

## HUNTER ABORIGINAL GUARDIANSHIP SUPPORT SERVICE

*Supporting Aboriginal children and youth in guardianship care and their families.*

## OUR SERVICE

We support Aboriginal children and young people (up to 18 years) with guardianship orders, their guardians/carers (Aboriginal and non-Aboriginal) and their families, who are living in the Hunter region (Maitland, Cessnock, Dungog, Singleton, Newcastle, Lake Macquarie and Port Stephens).

Our team walk alongside families and provide culturally safe services to help identify and achieve their goals.

By working together to develop a family goal plan, we can identify ways to support families and work towards positive outcomes to help Aboriginal children and young people on guardianship and their families to thrive.

Ensure Aboriginal children and young people with guardianship orders, their guardians and families feel **supported and connected.**

Provide our children and young people with opportunities to **thrive.**



## GUARDIANSHIP SUPPORT TRIAL SERVICE

This two year (Jan 2022 - Dec 2023) Guardianship Support Service trial program has been informed and developed based on the feedback, insights and advice to AbSec from Guardians and families across the Hunter.

Are you are guardian/carer of an Aboriginal child or young person on a guardianship order?

We are here to support your family with:

- Brokerage
- Information, referral and advice
- Cultural support
- Family support
- Advocacy support
- Community Connection



# GNOME CITY AND FAIRY WONDERLAND- PT.4!



Join Southlake Neighbourhood Centre in the creation of Gnome City and Fairy Wonderland in Yunung Community Garden! We will be painting lots of gnomes, fairies and other mystical ornaments to create a fun visual display in the garden.

**THURSDAY NOVEMBER 17 AT 3:30PM-5PM  
MORISSET MULTI PURPOSE CENTRE- 143 DORA ST, MORISSET**

This event is completely free, and suitable for children aged 5-12. Parent/carer supervision required. Afternoon tea provided!

Bookings are essential, contact Liam and Chris on 49737000 or [liaml@southlakecommunityservices.org](mailto:liaml@southlakecommunityservices.org)



**MORISSET**  
**LEARN AND LIVE**

## IMPORTANT NOTICE

**\*\* Please Note that Monday 19th December is a Staff Development Day for Teachers and SASS Staff in which case Students will not be required to attend school on this day.**

**Thank you.**

## VACATION CARE AVAILABLE ON MONDAY

### 19TH DECEMBER 2022

## AT MORISSET PUBLIC SCHOOL





**PLEASE CONTACT TO BOOK A SPOT**

**0460 002 150**

[morisset.ooshcareactivities.org.au](http://morisset.ooshcareactivities.org.au)

## Are you eligible to join Saver Plus & receive \$500 for your back to school costs?

Must meet all eligibility criteria:

-  Have a current Health Care or Pensioner Concession Card **AND** an eligible Centrelink payment\*
-  Be studying yourself **OR** have a child in school (can be starting school next year)
-  Have regular income from work (either yourself or your partner)\*
-  Be 18+ years old

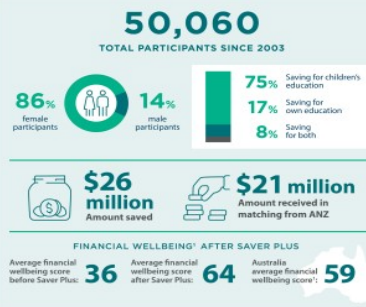
\*Many types of income and Centrelink payments are eligible



### Australia's longest-running financial education & matched savings program

Eligible families and individuals on low-income will:

-  Build budgeting skills
  -  Develop life-long savings habits
  -  Receive up to \$500 in matched savings for education costs
- \*Eligibility criteria applies.



### Share Saver Plus with your community

To join, participants must:

- Have a current health care card **OR** pensioner concession card
- Be studying yourself **OR** have a child in school
- Have regular income from work, yourself **OR** your partner

For full eligibility requirements, speak to a Saver Plus Coordinator.

For more information, refer interested participants to:

 [saverplus@bsl.org.au](mailto:saverplus@bsl.org.au)

 [saverplus.org.au](http://saverplus.org.au)

 1300 610 355

 @SaverPlusAU



# P&C NEWS - TERM 4 WEEK 5

**NEXT P&C MEETING IS MONDAY  
21ST NOVEMBER AT 1PM VIA ZOOM**

## **P&C AGM IS MONDAY 21ST NOVEMBER AT 12.30PM PRIOR TO OUR GENERAL MEETING**

This year we are looking for some new school community members to join us. If you would like to join the P&C, it's \$2 membership for the year - Those who were financial members as of our last General Meeting on 17th October are eligible to nominate for our P&C Executive positions and nominations are welcome. You don't have to become an exec but we do need new members!

## **CANTEEN NEWS - ONLINE ORDERS & STOCK**



- We have had some supply issues so some stock may have been showing as out of stock however this should now be back to normal.
- We can no longer purchase Large Vegemite Scrolls but are working on making our own!

## **THOMPSON PIE DRIVE - STARTS MONDAY 21ST NOVEMBER**



- Our Pie Drive from 21st November to Sunday 11th December
- We will supply a link to order directly from Thompson's Pies prior to the start date and you can use the code **MORISSETPS1122** to credit MPS with your order and a form with the information will also go home
- Orders are delivered directly to your address
- A percentage of the profits are then donated to the school

## **COOKIE PIZZA FUNDRAISER - ORDERS HAVE BEEN FINALISED**



- Our Cookie Pizza fundraiser is now finalised
- Delivery will be Thursday 10th November & can be collected from 2.30pm in the library
- Please let your child know to collect your order at bell time if your wish for them to take it home

## **WELLBEING WEDNESDAY - KYM THE REPTILE MAN**



Everyone had an amazing day with Kym The Reptile Man. The P&C was proud to donate the funds for this amazing and educational event! We would love to hear your feedback on our Facebook page about these events or even ideas for more!

## **SOUTHLAKES INCORPORATED FOOD DRIVE FOR CHRISTMAS HAMPERS**

We will be participating in this year's Food Drive for Southlakes Incorporated. More information to follow regarding how you can support this community venture.

**. Amanda Finucane - P&C President - 0414 270 885**

Find Morisset PS P&C on Facebook  &  like our page to keep up to date with events and fundraisers at the school. Links to fundraiser forms will also be found there.

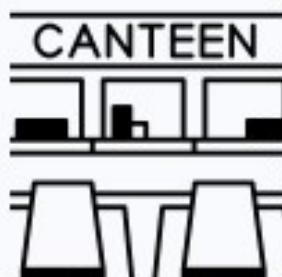




# CANTEEN VOLUNTEER FORM

## WEDNESDAY - BREAKFAST / LUNCH

## FRIDAY - BREAKFAST / LUNCH / RECESS



### WEDNESDAYS - BREAKFAST AND LUNCH

### 8AM TO 8.15AM START - 12.30PM FINISH

#### **VOLUNTEER DUTIES INCLUDE**

- Basic food preparation
- Packing Lunch Orders for collection by students
- Breakfast Service & Lunch Service
- General clean up and prep of frozen items
- Counting Days Takings



### FRIDAY - BREAKFAST AND LUNCH

### 8AM TO 8.15AM START - 12.30PM FINISH

#### **VOLUNTEER DUTIES INCLUDE**

- Basic food preparation
- Packing Lunch Orders for collection by students
- Breakfast Service & Lunch Service
- General clean up



### FRIDAY - RECESS

### 1.40PM START - 2.45PM FINISH

#### **VOLUNTEER DUTIES INCLUDE**

- Recess Service
- General Clean Up and prep of frozen items
- Counting day's takings

### CANTEEN VOLUNTEER FORM FOR 2022:

NAME..... CONTACT PHONE .....

AVAILABILITY:    WEDNESDAY        FRIDAY MORNING        FRIDAY AFTERNOON  
(PLEASE CIRCLE ALL THAT APPLY)

HOW OFTEN WOULD YOU BE ABLE TO HELP OUT?

EVERY FORTNIGHT    ONCE A MONTH    ONCE A TERM    SPECIAL EVENTS

OTHER (PLEASE STATE) .....

**A WORKING WITH CHILDREN CHECK MAY BE REQUIRED  
(VOLUNTEER), WHICH IS FREE TO OBTAIN FROM SERVICE NSW.**

**PLEASE RETURN THIS FORM TO THE OFFICE, WHO WILL PASS IT ON TO THE P&C CANTEEN  
TEAM, OR CALL ANN BEIRNE ON 0488 136464**

**THANK YOU!**